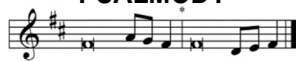


+++ IN THE NAME OF JESUS +++

Versicles, Gloria Patri, and Ascription of Praise for Lent 229

PSALMODY

Psalms 143 143



(Verse 1 serves as the antiphon that begins and ends the psalm.)  
(The congregation sings the indented portions and the *Gloria Patri*.)

Office Hymn: "Come to Calvary's Holy Mountain" 435

READINGS

(Please remain seated for the readings.  
The short response is spoken after each reading.)

Matthew 27:32-66

Responsory for Lent 231

Sermon: Isaiah 53:9; Matthew 27:57. 60

"St Matthew's account of Jesus's Passion's fulfilling prophecy"

CANTICLE

Canticle: *Magnificat* 231-232

(The responsive antiphon sung before the *Magnificat* is repeated after the *Magnificat*.)

Offering 232

(Offerings placed in the Box in the Narthex before the Service are brought forward here.)

PRAYER

Litany (Musical Setting) **Litany Booklet**

(Where petitions are grouped, sing the indicated response after each petition.)

The following Versicle and Response are used between the Lord's Prayer and Collects.)

**P** O Lord, do not deal with us according | to our sins.\*

**R** Do not reward us according to our in- | iquities.

Benedicamus and Benediction 234

Closing Hymn: "Now the Light Has Gone Away" 887

+++ TO GOD ALONE BE THE GLORY +++

The black and white line-art on the front is by Lutheran Artist Edward Riojas of Our Savior Lutheran Church, Grand Rapids, Michigan, and is part of a package purchased from Higher Things and donated to Pilgrim for such uses. The Psalm Tone above is © 2006 Concordia Publishing House and is reproduced by permission under license #110005153.

# MIDWEEK VESPERS

Lent 5 – 2026 March 25



**St. Matthew's account of Jesus's Passion's  
fulfilling prophecy: Isaiah 53:9**



**Pilgrim Lutheran Church**

Lutheran Church—Missouri Synod  
Corner of Broadway and Florey

713 Florey Street  
Kilgore, Texas 75662-3503  
[www.pilgrimlc.org](http://www.pilgrimlc.org)

Rev. Dr. Jayson S. Galler, Pastor  
(903) 984-4333  
[pastor@pilgrimlc.org](mailto:pastor@pilgrimlc.org)

