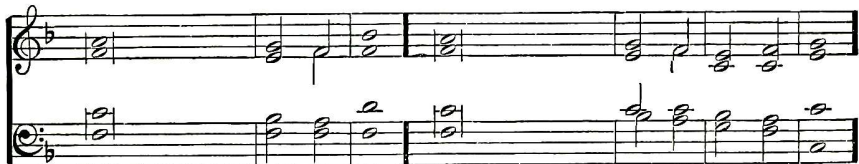


Dominus Regit Me

Psalm 23

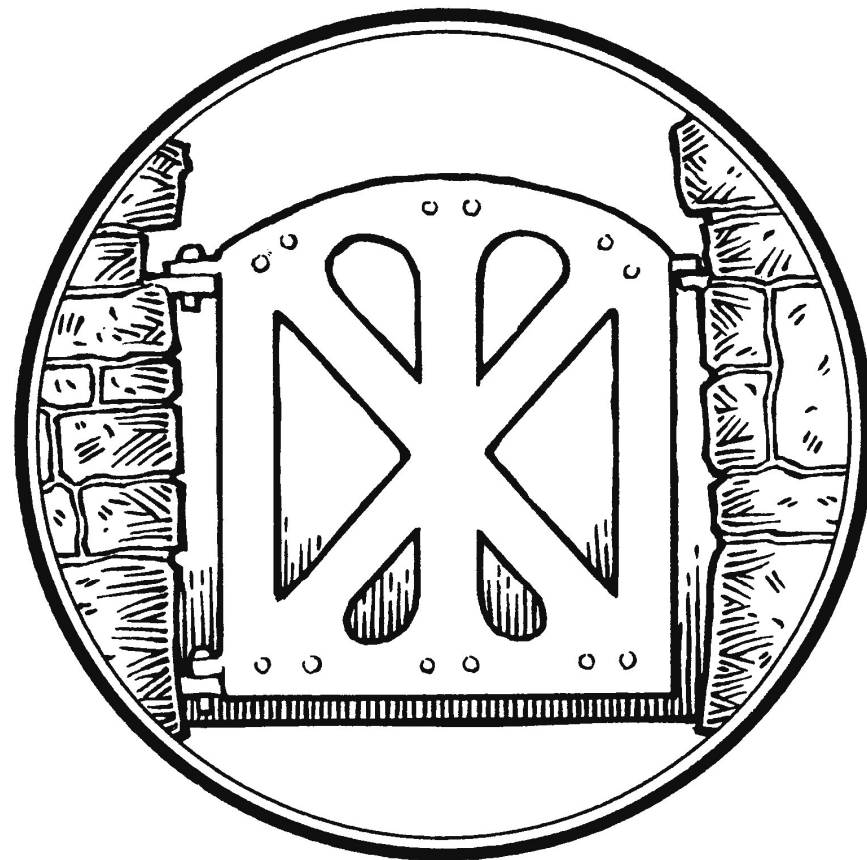
Source unknown



1	The Lord is my	Shep-herd,	I	-	-	-	shall	not	want.
3	He re-	-	-	storeth	soul,	He leadeth me in	for His	name's	sake.
		my				the paths of right-			
						eousness			
5	Thou preparest a	} en-e-	} mies;	} Thou anointest my	} head with oil, my	} runneth	} o-	} ver.	
	table before me in								
	the presence of mine								
7	Glory be to the	to the	Son	and	-	-	to the	Ho-ly	Ghost;
	Father and								



2	He maketh me to lie	} pas-	} tures,	} He leadeth me	} still	} wa-	} ters.									
	down in green															
4	Yea, though I walk	} e-	} vil;	} for Thou art with	} me; Thy rod and	} staff,	} they	} comfort	} me.							
	through the valley															
	of the shadow of															
	death, I will fear no															
6	Surely goodness and	} of my	} life,	} and I will dwell	} in the house of	} Lord	} for-ev-	} er.								
	mercy shall follow															
	me all the days															
8	As it was in the be-	ever	shall	be,	world without	-	end.	A-	men.							
	ginning, is now, and															



***Jesus is the door of
the sheep; those who
enter by Him will be
saved.***

The black and white line-art drawing on the front cover is by Lutheran Artist Edward Riojas of Our Savior Lutheran Church, Grand Rapids, Michigan, and is part of a package purchased from Higher Things and donated to Pilgrim for such uses. Psalm 23 above is from *The Lutheran Hymnal* #662 © 1941 Concordia Publishing House, reproduced by permission included in Lutheran Service builder license #110005153.



Pilgrim Lutheran Church
Lutheran Church—Missouri Synod
Corner of Broadway and Florey



713 Florey Street
Kilgore, Texas 75662-3503
www.pilgrimlc.org

Rev. Dr. Jayson S. Galler, Pastor
903- 984-4333
pastor@pilgrimlc.org

ALLELUIA! CHRIST IS RISEN! He is risen indeed, alleluia! That ancient exchange of greetings on Easter morning says it all and so is often used throughout the Easter season. You are especially welcome to our chief Divine Service this day during the Easter season! We are glad that you are here and invite you to be present with us each and every Sunday. You are also welcome to any of our congregation's other activities, to seek out spiritual direction from our pastor, and to make Pilgrim your church home!

AS YOU ARRIVE, please move down the pew towards the wall, in order to leave room for others. If you arrive late, please wait for an appropriate time to enter the sanctuary, such as during a hymn. Please also remember to turn off your cell phones and/or any other electronic devices. Thank you!

ORDER OF SERVICE: To your right you will find today's order of service. The right side of that outline indicates from where the item listed comes: either in this bulletin or the hymnal, *Lutheran Service Book*, with the Psalms towards the front, its liturgical pages towards the middle, and its hymns towards the back. The Δ symbol before a hymn stanza indicates that it especially gives glory to the Triune God; we stand before singing the stanza and, in most cases, conclude the stanza by singing "Amen.", if an "Amen" is not already included.

HOLY COMMUNION: At Pilgrim we value your presence among us and love and care about our guests and visitors! However, due to the sad divisions that exist in the world and even in Christianity, we cannot commune everyone at the Lord's Table here. We respectfully ask that guests and visitors who desire to commune first speak with the pastor well before the service. All those present but not communing still may approach the rail for a blessing: come forward and kneel with those who are communing, but fold your arms over your heart and place your hands on the opposite shoulders. For more information about the ancient practice of Closed Communion, see <http://www.pilgrimlc.org/closed-communion>.

INDIVIDUAL CUPS: The top of the tray contains several individual cups of highly-diluted wine. If you receive the blood of Christ in an individual cup, please be sure to wait to consume it until Pastor comes by with the chalice, so that he knows you are receiving it in that fashion. If the supply of individual cups is depleted, please accept the blood of Christ from the chalice.

THE FOURTH SUNDAY OF EASTER 2026 APRIL 26
DIVINE SERVICE, SETTING ONE (*Lutheran Service Book*, pp.151-166.)

+++ IN THE NAME OF JESUS +++

Catechesis	Section 1 The Sacrament of Holy Baptism (Fourth)	325
Confession and Absolution	(right column)	151

SERVICE OF THE WORD

Entrance Hymn:	"Good Christian Friends, Rejoice and Sing"	475
Kyrie		152-153
Hymn of Praise:	"This Is the Feast"	155
Salutation and Collect of the Day		156
First Reading (& Response):	Acts 2:42-47	156
Psalm: Psalm 23		Back Cover

(All sing the entire Psalm as indicated.)

Epistle (& Response):	1 Peter 2:19-25	156
Alleluia and Verse (Common)		156
Holy Gospel (& Responses):	John 10:1-10	157
Hymn of the Day:	"The King of Love My Shepherd Is"	709
Sermon	John 10:1-10	
Nicene Creed		158
Prayer of the Church, Offering, & Offertory		159-160

P For ... let us pray to the Lord: **G** **Lord have mercy**
(Offerings placed in the Box in the Narthex before the Service are brought forward here.)

SERVICE OF THE SACRAMENT

Preface, Sanctus, Prayer of Thanksgiving, (left column)		160-163
The Words of Our Lord, Proclamation of Christ, (Prayer of Remembrance,) Lord's Prayer, Pax Domini, & Agnus Dei		
Distribution (& Distribution Hymns):		164
	"Our Paschal Lamb, That Sets Us Free"	473
	"Christ the Lord Is Risen Today; Alleluia"	463
	"Savior, like a Shepherd Lead Us"	711
Post-Communion Canticle	"Nunc Dimittis"	165
Post-Communion Collect & Benediction		166
Closing Hymn:	"All for Christ I Have Forsaken"	753

+++ TO GOD ALONE BE THE GLORY +++

ANNOUNCEMENTS FOR THE WEEK OF APRIL 26, 2026

BEFORE THE SERVICE: As you greet and visit one another, please be sensitive to others who may wish an opportunity for silence to pray and otherwise to prepare for worship.

OFFERING BOX: Offerings may be placed in the Offering Box in the Narthex before or after services. Envelopes are available on the side of the Box for your use, such as if you would like your cash offering to be recorded, tracked, and receipted in a report back to you.

PEW CUSHIONS: If you would like to use a cushion either for your seat or for your seat and back, cushions for your use are available in the Usher's Closet off the north side of the Narthex.

PEW SLIPS: *Visitors*, please register your attendance both by completing a slip from rack on the back of the pews and placing them in the Offering Box in the Narthex and by signing the Guest Register at the door. *Members*, please complete a slip only if your contact information has changed or you have a new or updated prayer-list request. (The Usher tracks church attendance and communion participation.)

GROWING IN WORSHIP: Parents, please make use of the bulletins available in the Narthex for children aged 5-10, including the bulletins' activities for the whole week!

LARGER-PRINT/FLOW-THROUGH BINDERS are available in the Narthex for those who have trouble seeing the smaller-print of the hymnal, those with other special needs who cannot follow the liturgy in the hymnal or handle its weight, and those who are visiting Pilgrim who are not already familiar with liturgical services and/or our hymnal. If you need or otherwise want to use a flow-through and can help minimize paper and copying expenses, a PDF of the flow-through binder's contents is available in the upper-right corner of Pilgrim's homepage, www.pilgrimlc.org, to open on or to download to your electronic device.

PRAYER REQUEST: If you have a special petition for the Prayers of the Church, please notify the Usher, Elder on Duty, or Pastor before the service.

IF A NEED SHOULD ARISE, Americans with Disabilities Act (ADA) Restrooms are available in the Parish Hall (non-ADA Restrooms are available in the Office Area, one with a change table), and there is a Cry Room (also with a change table) off the south side of the Narthex. Let the Usher or Elder-on-Duty know if you need assistance or supplies.

Announcements continue on the inside of this insert.

Announcements continue from the front of this insert.

LAST WEEK: There were 4 students, 1 teacher, and 1 teacher helper for Sunday School; 22 people were present in-person for Adult Bible Class, and 2 people participated via Jitsi; 49 people were present in-person for the Sunday Divine Service (28 communed), and 4 devices streamed the Service live via YouTube; 3 people were present in person for Midweek Bible Study, another 3 people participated via Jitsi; 1 catechumen was present for the new in-person Thursday early-afternoon class; 2 catechumens connected via Jitsi for the Thursday late-afternoon class; and 3 catechumens were present in-person for the Thursday evening class.

THANKS: to all those caring for the inside and outside of Pilgrim's facilities; to Rev. Adler for the use of his chasubles; to Remo Gualtieri and Ben Ford, and all those helping with the video and audio for classes and services; and to Ellen Menconi for her Church Office work.

SERVING TODAY: The Rev. Dr. Jayson S. Galler, Pastor; Jeromy McMurray, Elder on Duty; and Joy McHargue, Substitute Organist Service Operator.

SUBSTITUTE ORGANIST SERVICE: Today our usual accompanist Elaine Navaille is recovering from cataract surgery and resting her hands, and we are staying familiar with using the Substitute Organist Service. Remember that there are short introductions to some liturgical pieces.

LIFE THOUGHTS: Early on all who believed were "selling their possessions and belongings and distributing the proceeds to all, as any had need" (Acts 2:45). They did so in part because they recognized that the Gospel of Jesus grants worth and dignity to every person. Their practice does not mean that we need to sell all we have, but it does mean that we would "die to sin and live to righteousness" (1 Peter 2:24), loving the poor and needy, as well as the unborn, the sick, and the dying.

STEWARDSHIP THOUGHTS: "For to this you have been called, because Christ also suffered for you, leaving you an example, so that you might follow in his steps" (1 Peter 2:21). Our heavenly Father wants us to grow into the image of His Son and to follow in His steps. Jesus's suffered for us to redeem us also shows us what love looks like and leaves us an example of self-giving, sacrificial generosity. "Let us ever walk with Jesus, follow His example pure" (*Lutheran Service Book* 685:1).

AS YOU DEPART, please be mindful of those who are ushered out behind you, who may have difficulty standing and waiting, and so who may need

an open path to the door and to get to their cars quickly. If you stop to talk to someone in the Sanctuary, please keep the aisle as clear as possible and please delay lengthier conversations with the pastor until after he has greeted everyone. Thank you for your consideration!

“LOOSE-CHANGE SUNDAY”: Please use the large Mite Box in the Narthex today, in order to contribute your loose change and more, beyond your regular offering, for LWML mites that in part fund District and National mission grants (lists of grant recipients are on the bulletin board above the Mite Box).

AVAILABLE IN THE NARTHEX are hardcopies of the May 2026 edition of Pilgrim’s monthly newsletter, *The Pilgrimage*; Pastor Galler’s recent newspaper columns (including his 04/18 column titled, “Jesus’s resurrection is a sign for you”); the larger-print schedule of Daily Bible Reading for April and May; Pilgrim’s Constitution, Bylaws, and updated Standing Rules; *Portals of Prayer* for April-June 2026; the latest Church Directory (dated 2026/01/22 on light-blue paper); issue #16 (Autumn 2025) of *Christian Culture: A printed Magazine for Lutherans* from Luther Classical College; and Pilgrim’s Funeral Planning Worksheet for completing, discussing with Pastor Galler, and filing in the Church Office.

AVAILABLE IN THE OFFICE AREA are several Easter Lilies that were in Pilgrim’s Chancel for the Easter season, purchased out of the congregation’s operating budget. Please feel free to take one or more home with you today and replant in your yard for next Easter!

FINANCIAL SECRETARY: Pilgrim is in immediate need of a Financial Secretary. If you are willing to take on the responsibility, either on a temporary interim or regular term basis, please speak with Acting-President Remo Gualtieri as soon as possible. Help is available for you!

QUARTERLY CHURCH COUNCIL MEETING: Pilgrim’s Church Council is scheduled to have its regular Second-Quarter Meeting today after the Divine Service. The Packet with the working agenda and reports was distributed electronically to Pilgrim’s members and is available in hardcopy in the Narthex. Even though only Council Members can vote in Council Meetings, everyone is encouraged and welcome to attend and to join in the discussion. The Council makes some decisions and recommends other decisions to the Voters’ Assembly. Humanly speaking, our participation in the administration of Pilgrim’s secular affairs is necessary for its survival, and, spiritually speaking, our participation is fruit of our faith.

Announcements continue on the back of this insert.

Announcements continue from the inside of this insert.

KILGORE CITY COUNCIL MEETING: Pastor Galler is scheduled to open Kilgore City Council Meeting with prayer this Tuesday, April 28, at 5:30 p.m. at City Hall.

STUDY HOURS: Pastor Galler is usually in his study Tuesdays from 5:00-8:00 p.m., Wednesdays through Fridays from 9:00 a.m. to Noon, and Saturdays Noon to 3:00 p.m. Come for Individual Confession and Absolution (see *Lutheran Service Book* 292-293) or for any other reason. Pastor Galler is also available at other times by appointment at Pilgrim, or he can come to you (email pastor@pilgrimlc.org or text/call 903-984-4333). For emergency pastoral care, please call Pastor Galler.

“ALL THE PROPHETS TESTIFY”: Pilgrim’s Midweek Bible Study continue this Wednesday, April 29, at 7:00 p.m. with Amos 5:1-17. All of the prophetic books testify that everyone who believes in Jesus receives life in His Name (Acts 10:42-43). All people are welcome to participate in the Study, either in-person in the Conference Room/Library or on-line via Jitsi. For more information and for the handouts and audio and video files from past sessions, see <https://www.pilgrimlc.org/bible-studies/prophets>.

KILGORE POLICE DEPARTMENT’S WEEKLY DEVOTION will be conducted by Pastor Galler this Thursday, April 30, at 7:40 a.m. at the Kilgore Police Station.

CATECHESIS: This Thursday, April 30, the adult class meets in-person in the Conference/Room Library at 12:30 p.m., the youth Class connects via Jitsi at 4:15 p.m., and the evening family class meets in-person in the Conference Room/Library at 7:30 p.m.

NEXT SUNDAY: 9:15 a.m. Refreshments; 9:30 a.m. Sunday School and Adult Bible Class (“Basic Bible Accounts”); and 10:45 a.m. Divine Service, followed by a gathering of “The 15-2 Folk”.

Readings: Ac 6:1-9, 7:2a, 51-60; Ps 146; 1 Pet 2:2-10; and Jn 14:1-14.

Hymns: LSB 875, 633, 909, 517 (with stanza 7), 465, and 687.

Prepare yourself for worship in advance by praying about, reading over, and meditating on the appointed Scripture Readings and Hymns.

“THE 15-2 FOLK” will gather next Sunday, May 3, after the Divine Service, in the Great Room of the Parish Hall, for heavy snacking and Cribbage playing. All are welcome to stay for the heavy snacking, even if not staying for the Cribbage playing! If you do not know how to play Cribbage, they will teach you! You can also observe the games or just visit with those playing.